

Installation guide

Wozart Smart Plug

Installation Guide Version 1.0

Updated on 07/09/2021

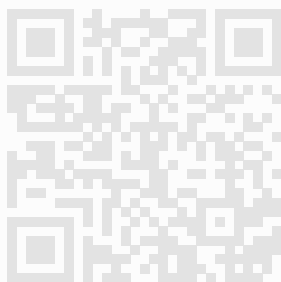
Welcome

This Guide will walk you through the installation of Wozart Smart Plug

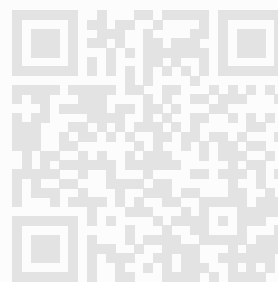
We hope you enjoy your purchase. We at Wozart have carefully crafted a reliable, durable and secure Smart Home product. We promise to toil harder to build awesome devices that make life simpler and planet more livable.

We hope our association continues and grows stronger with each passing day. You are awesome for supporting the change we wish to bring in the way people live

For configuration video, scan the QR code below



For iOS devices



For Android devices

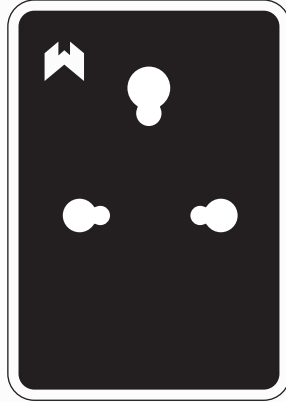
As Wozart app is frequently updated, there may be changes to this manual. Please refer to www.wozart.com/support for the latest version of the manual.

Download Wozart app from Google play store or App store.

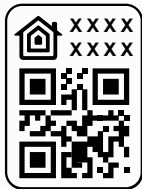
Table of Contents

What's in the box	4
Description	5
Technical Specifications	5
Precautions	6
Setup Guide	7
Troubleshooting	8
Warranty & Service	9

What's in the box



Wozart Smart Plug



Setup Code Sticker



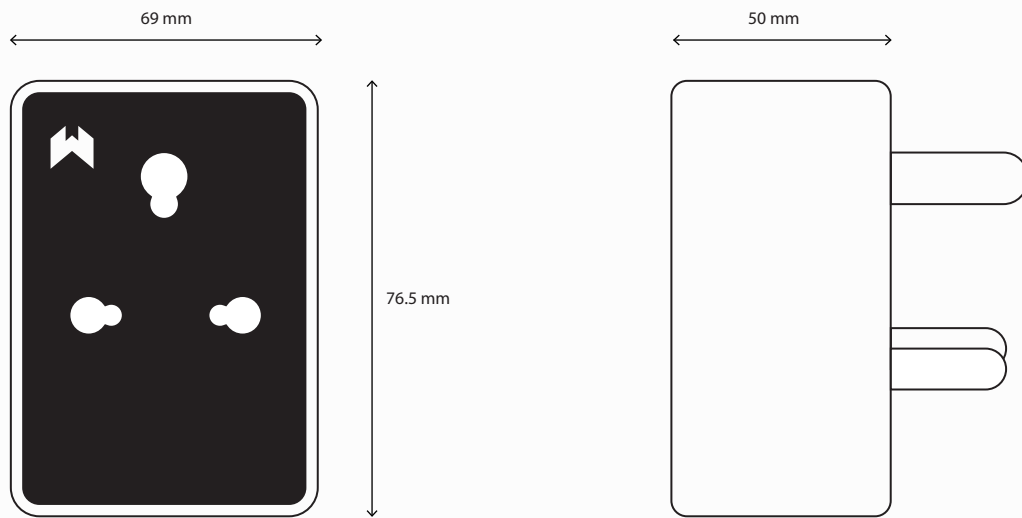
Warranty Card

Description

Wozart Smart Plug is a smart device that turns electrical appliances or circuits on and off. The device fits into your existing wall socket and can be controlled either using voice commands or app interfaces on smart controller devices.

Technical Specifications

Power Supply	110 - 230 V AC
Rated load current	1 * 20 A
Operating Temperature	0-40°C
Ambient Humidity	0-95 % RH without condensation
Communication Protocol	Wi-Fi 2.4 GHz 802.11
Dimensions (Height*Width*Depth)	76.5 mm * 50 mm * 69 mm
Weight	128 Gms
Model	WSP01



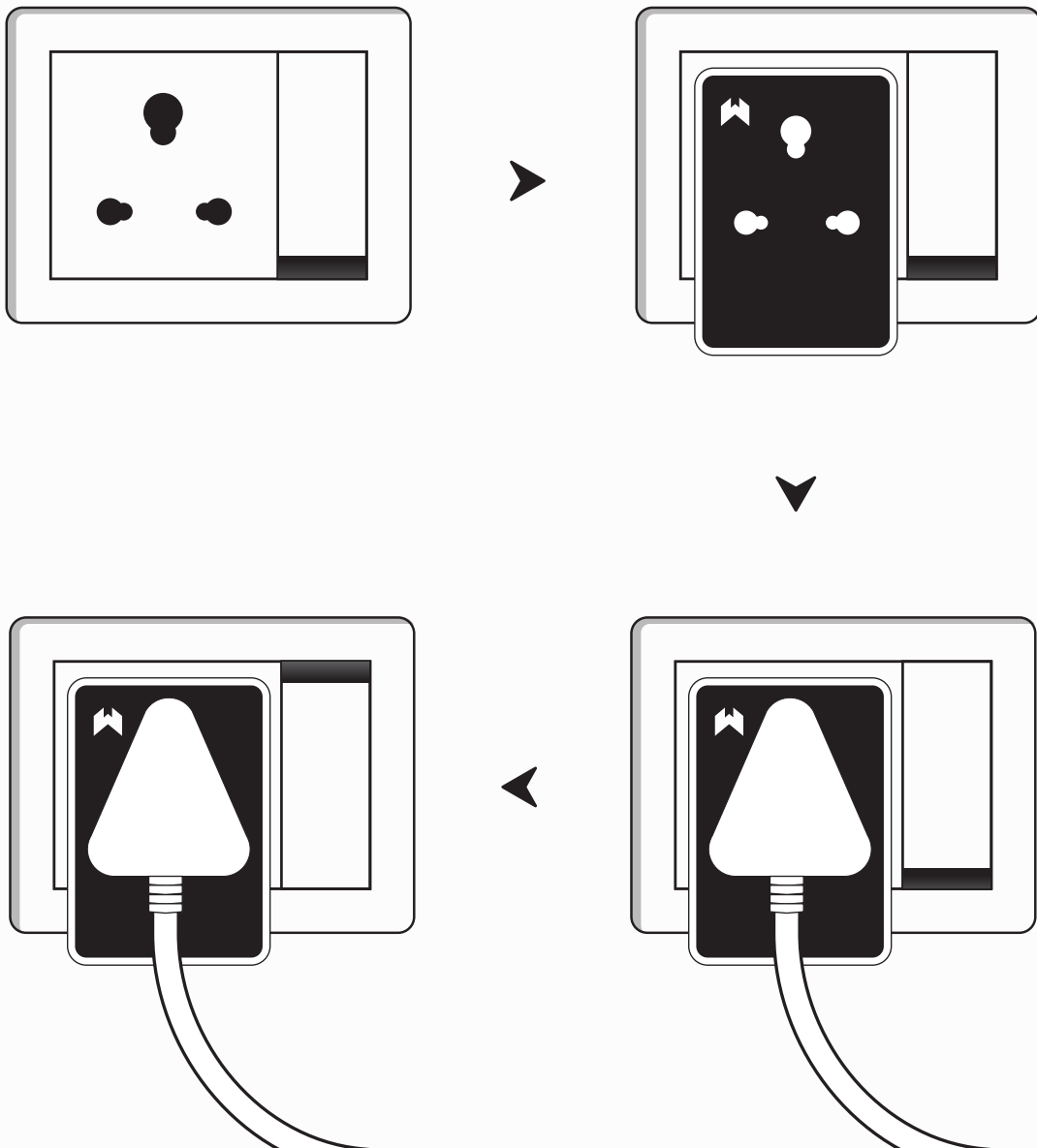
Precautions

- The device is designed for control of heavy power appliances.
- Do not handle the device with wet or moist hands.
- Do not modify or alter the device in any way not included in this manual.
- Do not use in damp or wet locations, near shower, swimming pool, sink, or anywhere else where water or moisture are present.
- Do not connect device to loads exceeding recommended values.
- Load plugged in to the device must be powered by 110-230 V AC power
- If you do not have basic electrical wiring knowledge, please get help of an electrician or contact us.

Setup Guide

Switch off the main power supply

- Insert Smart Plug into the 16A power socket.
- Plug in the appliance into the Wozart Smart Plug.
- Turn on the main power supply to the device and proceed with configuration on the Wozart app.



Troubleshooting

The device isn't responding

- a) Check if the Wi-Fi router is functioning properly.
- b) Reconnect your smart controller device
eg: Phone to Wi-Fi network to which Wozart device is connected.
- c) Switch off the power supply to the device for 5 seconds and then switch it back ON.
- d) Do factory reset as explained below and reconnect the device.

Factory Reset

Press and hold the reset switch on the top of the device for 10 seconds until you hear the buzzer sound.

Note: If factory reset is done all your customization is lost. Do it only if required.

Not able to scan the QR sticker as it is damaged.

Use the Spare QR Sticker provided in the Wozart Smart Plug box or enter the code manually.

Warranty and Service

This Wozart device can be replaced in full for three years from date of purchase in case of damage or malfunction due to manufacturing defects. This Warranty does not cover cosmetic damage or damage from accident, neglect, misuse, alteration or abnormal conditions of operation or handling. Wozart Technologies or any of its licensors are not liable for any special, incidental, consequential or indirect damages or losses arising from any cause.

Resellers are not authorized to extend any other warranty on Wozart's behalf. Service for all Wozart products will be provided for device life time. To obtain service, contact nearest authorized reseller or Wozart Technologies Private Limited.

Thank You